



ARISTON



AURES MULTI

ELECTRIC INSTANTANEOUS MULTI POINT WATER HEATERS



Compact, efficient, very quick and **elegant**, the new Aures electric instantaneous water heaters are the ideal solution for having **hot water immediately ready** right after you open the tap.



MULTI POINT

Hot water to multiple points



FLOW SENSOR

Auto-On when flow is detected



TOTAL SAFETY

Double Safety Thermostat



COMPACT SIZE

Blends harmoniously into your living spaces



EASY INSTALLATION

Easy to install and maintain



ENERGY EFFICIENT

Limited water and heat loss



ITALIAN DESIGN

Designed by Umberto Palermo

010 745 9910

info.za@aristonthermo.com

www.ariston.com



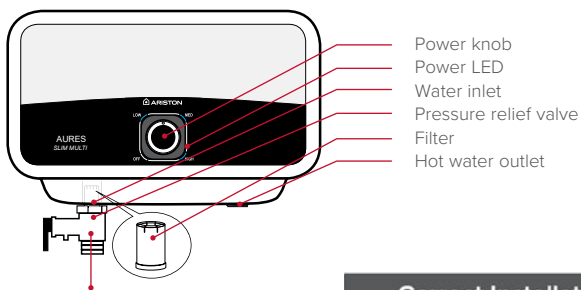
AURES MULTI POINT FEATURES AND BENEFITS

COMFORT REGULATION:

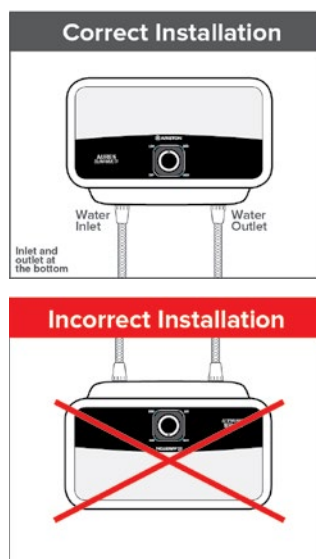
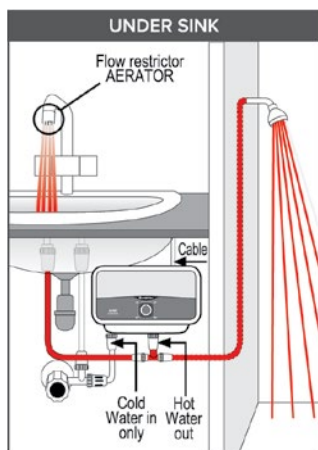
/ Set the desired performance with an easy to use power dial

INSTALLATION (WALL MOUNTED ONLY)

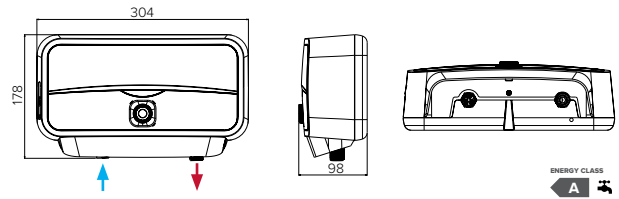
MULTI POINT can supply more water points at the same time (pressurised).



Unit must be installed with Pressure Relief Valve (supplied)



TECHNICAL INFORMATION



	AURES MULTI	AURES MULTI 3 PHASE
Model Name	Aures SM 5 EU	Aures SM 12 TR EU
Product Code	3520021	3520031
ErP Class	A	
Power (KW)	5	12
Type	Multi point installation - Hidden	
Voltage (V)	220 - 240	400 - 415
Phase	Single Phase	Three Phase
Ampere (A)	22,7	30
Recommended fuse rating (Amps)	30	40
Recommended Cable Size	4mm ²	6mm ²
Frequency (Hz)	50/60	
Heating Element	Copper	
Working Pressure (Min - Max)	50kPa ~ 800kPa	50kPa ~ 800kPa
Max Working Temp (°C)	50	
IPX Rating	IP24	IP24

UNDERSTANDING PERFORMANCE

The temperature and flow rate of the water entering the product determines how well it performs.

Flow rate - For higher performance (temperature), reduce the flow rate (use the below chart for guidance).

MODEL	PERFORMANCE	
	ΔT (°C)	FLOW RATE (L/MIN)
AURES SM 5 EU Multi Point	20	3,6
	25	2,9
	30	2,4
AURES SM 12 TR EU Multi Point	20	8,6
	25	6,9
	30	5,7

Ambient water temperature – The product can only heat the water by a certain amount of degrees (ΔT). In winter when the incoming water temperature is colder, the output water temperature will be less. Please reduce the flow rate to compensate.



The warranty period is valid from your purchase date (please retain proof of purchase) and on condition that the unit was installed by a qualified electrician in accordance with the instructions enclosed in the unit.



For further information visit our website ariston.com
Ariston Service 010 745 9911

